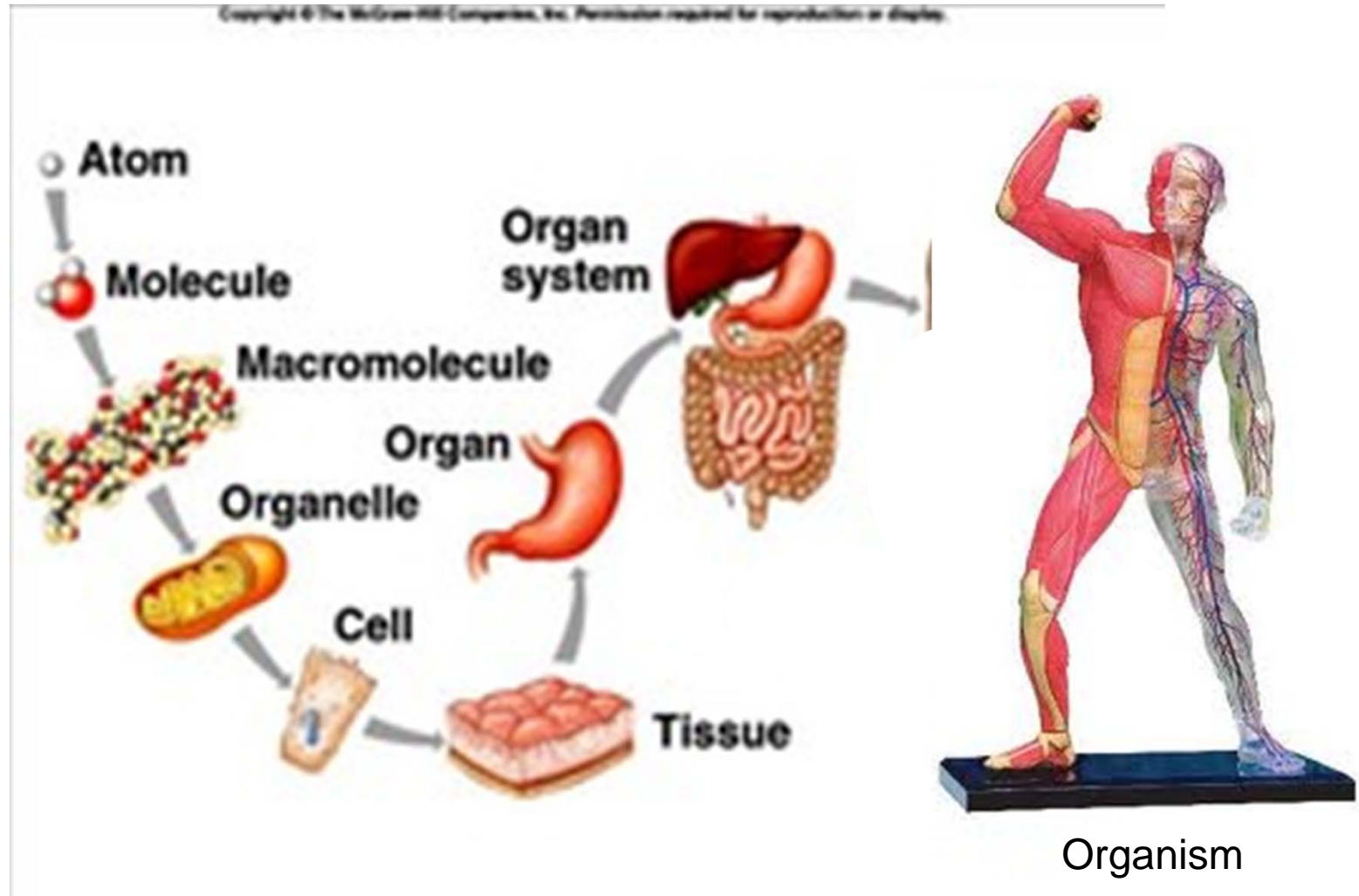


Is that a cell, tissue, organ,
organ system or organism?

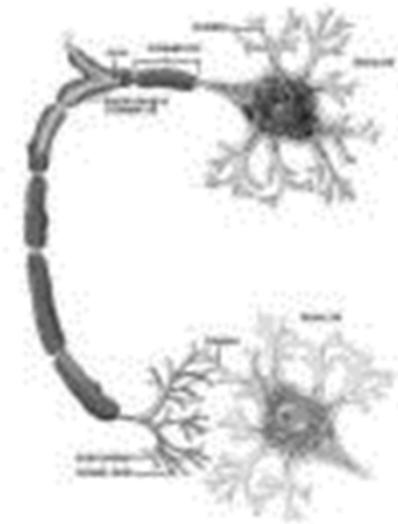
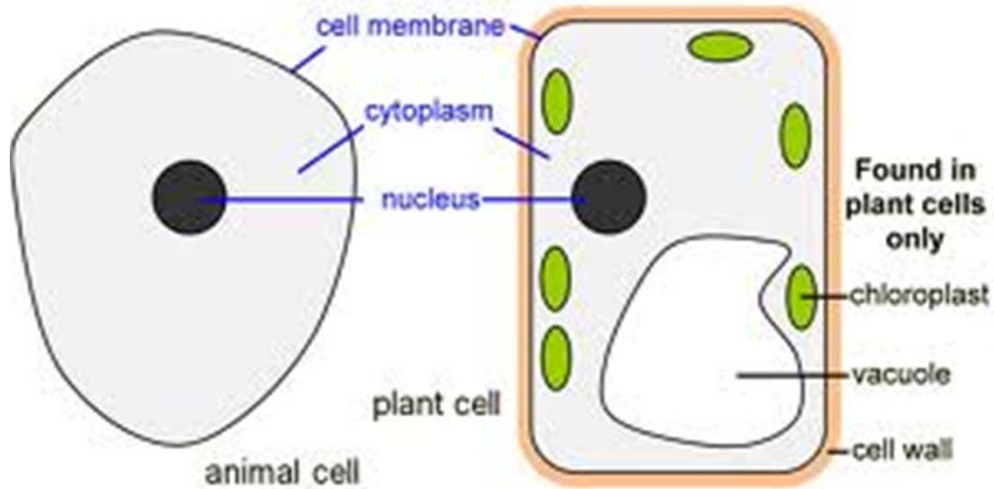
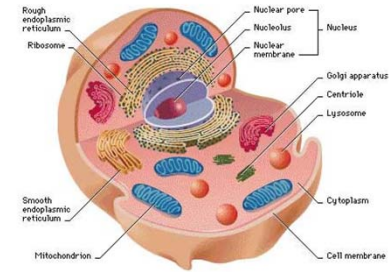
How do you know?

Simple to Complex



If it is a **cell**....

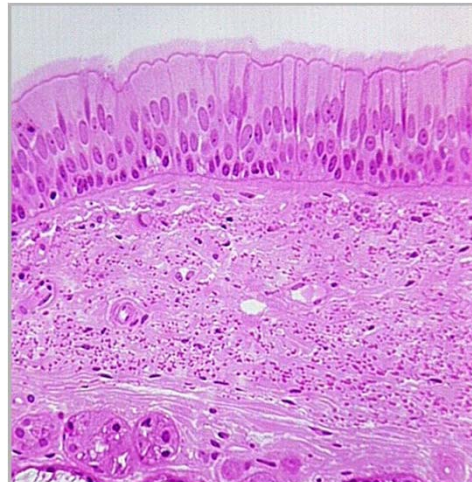
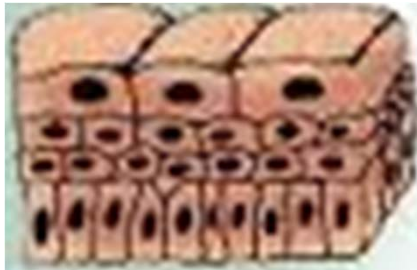
- A cell is a small compartment
- The basic unit of life...like a **building blocks**



If it is a **tissue**....

- A group of cells working together
- Similar shape
- You will see many different cells together

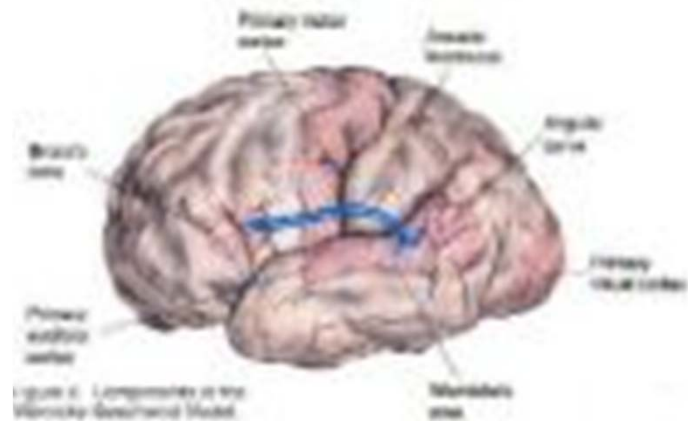
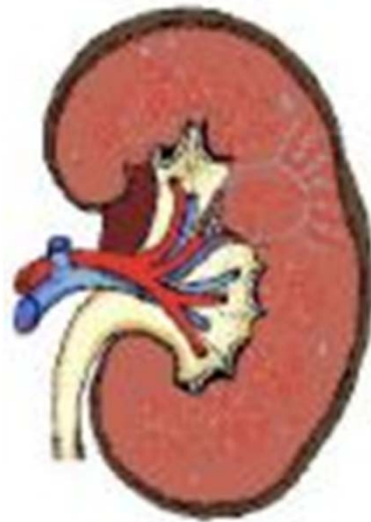
ex. skin
nerves
muscle



If it is an **organ**....

- **Many different tissues work together**
- Usually can't see individual cells

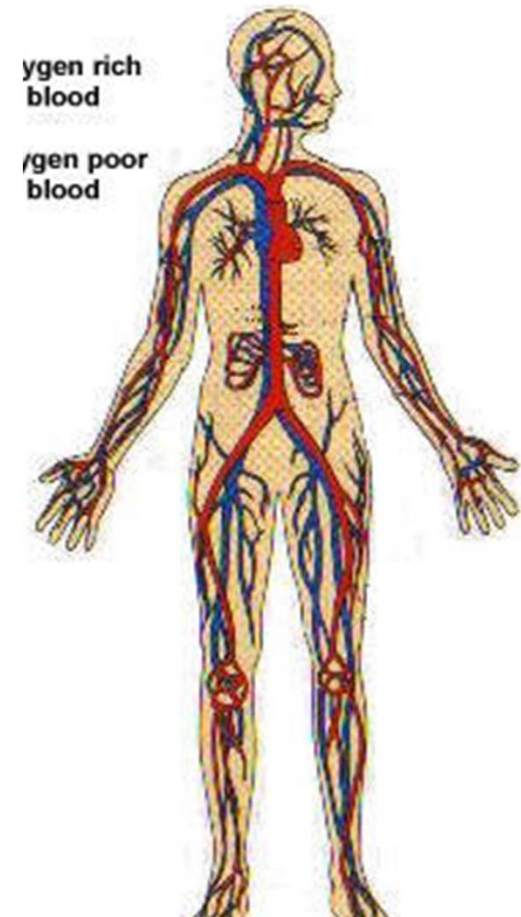
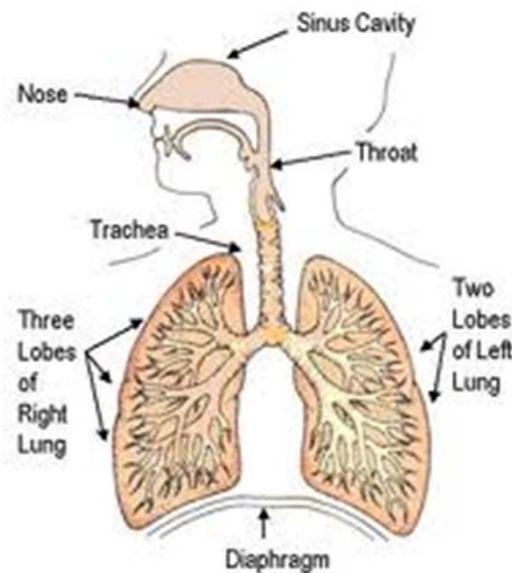
ex. lungs
 kidney
 brain
 heart



If it is an **organ system**....

- Group of organs working together
- Perform a specific job

ex. respiration
 circulation
 reproduction



If it is an **organism**....

- A few organ systems combined
- Perform all life functions
 - Made of cells
 - Grow & Develop
 - Respond & Adapt
 - Ingestion & Digestion
 - Excretion
 - Respiration
 - Reproduction ex.



flower
bird
bug

