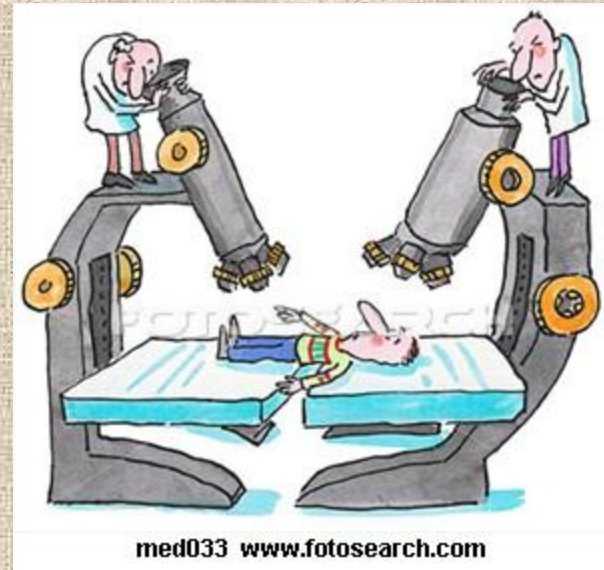


# Introduction to the Microscope

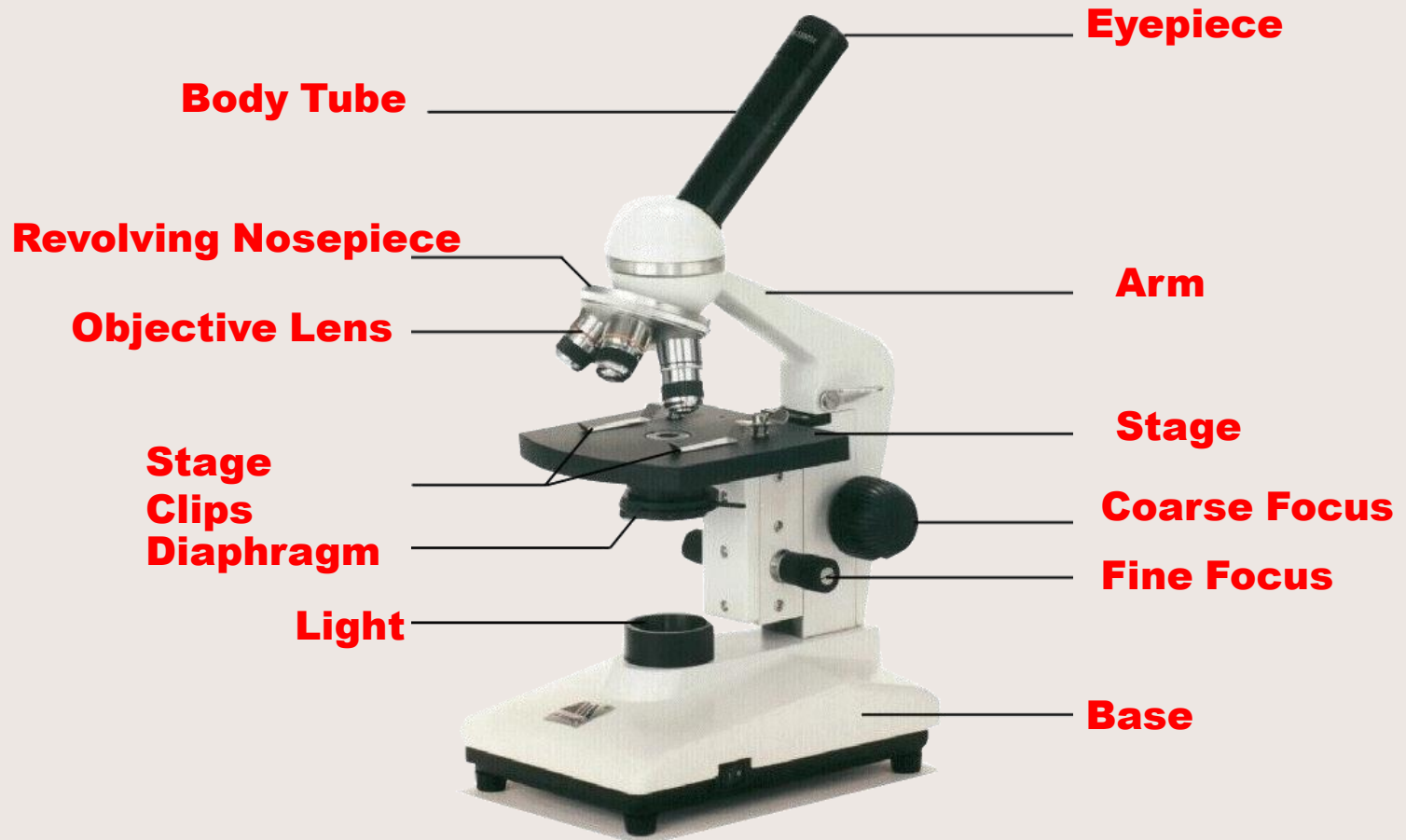


# Microscope Care

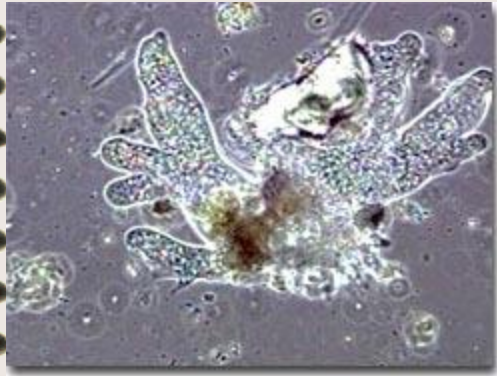
- Always carry with 2 hands
- Only use lens paper for cleaning
- Do not force knobs
- Always store with cord wrapped up
- Keep desk clear



# Microscope Parts



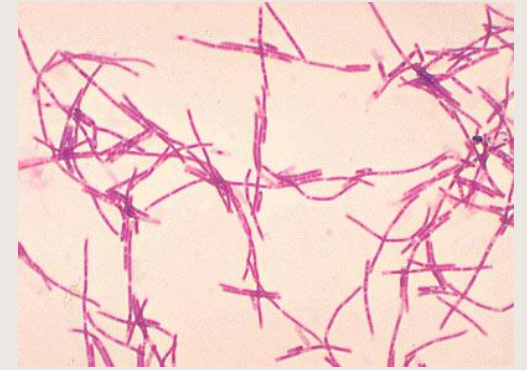
# Microscope Images



Amoeba



Streptococcus bacteria



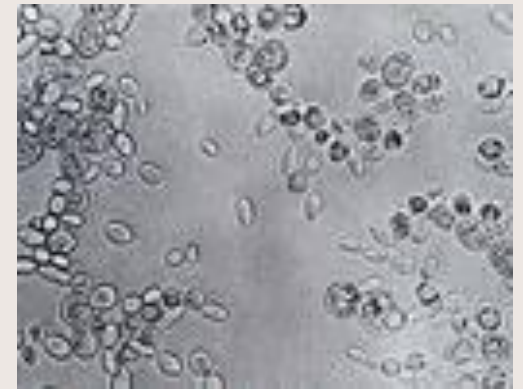
Anthrax bacteria



Human cheek cells



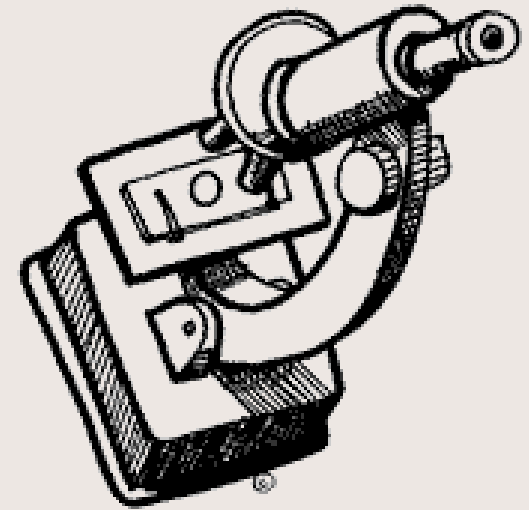
Plant cells



Yeast cells

# Using the Microscope

- Click Nosepiece to the lowest (shortest) setting
- Place the Slide on the Microscope
- Use Stage Clips
- Look into the Eyepiece
- Use the Coarse Focus to find object
- Then use fine focus



# Using Medium Power

- Click the nosepiece to the middle lens
- Do **NOT** use the Coarse Focusing Knob
- Use the Fine Focus Knob to bring the slide into focus



What can you find on your slide?

# Using High Power

- Click the nosepiece to the longest lens
- Do **NOT** use the Coarse Focusing Knob
- Use the Fine Focus Knob to bring the slide into focus

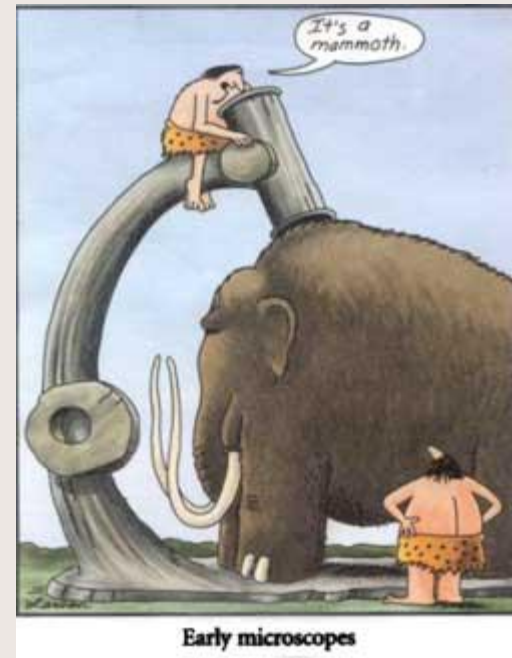


What can you find on your slide?

# Microscope Drawings

## The Rules:

- Pencil only – no colour
- Title
- Drawing in a circle
- Power under the drawing
- Not shading – use dots
- As detailed as possible





# Microscope Drawings

- Exemplars

